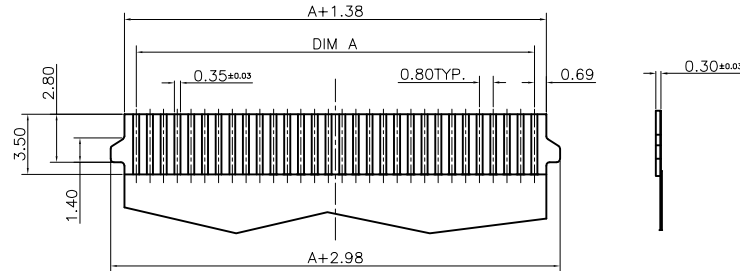
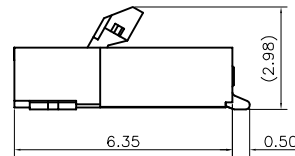
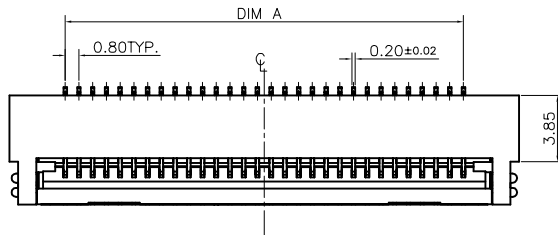


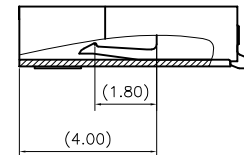
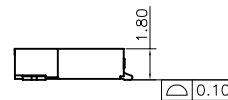
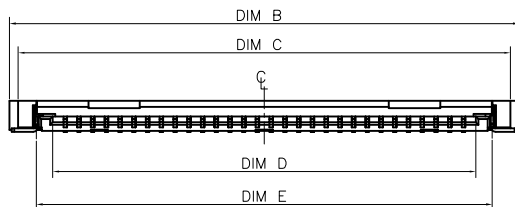
RECOMMENDED PCB LAYOUT
GENERAL TOLERANCE ±0.05



RECOMMENDED FPC/FFC DIMENSIONS
GENERAL TOLERANCE ±0.03



SCALE 6:1



SCALE 6:1

NOTES:

- MATERIAL:
 - HOUSING: THERMOPLASTIC, HIGH TEMP., UL94V-0. NATURAL
 - ACTUATOR: THERMOPLASTIC, HIGH TEMP., UL94V-0. BLACK
 - CONTACT: COPPER ALLOY
 - FITTING NAIL: COPPER ALLOY
- FINISH:
 - CONTACT: 50u" MIN. NICKEL UNDERPLATING OVERALL. 1:GOLD FLASH.
 - FITTING NAIL: 50u"MIN. NICKEL UNDERPLATING OVERALL. 80u"MIN. MATT TIN PLATING ON SOLDER TAILS(LEAD FREE).
- REFLOW SOLDER CAPABLE TO 260°C PER ACES SPEC.
- SPEC. PLS. REFER TO PS-51518-xxxxx-xxx
- PACKAGE PLS. REFER TO 51518-xxxxx-TRP
- PART NUMBER

52505-XXX X X-XXX	HOUSING MATERIAL & COLOR	ACTUATOR MATERIAL & COLOR
NO OF CKT	001 HALOGEN FREE PLASTIC & NATURAL	HALOGEN FREE PLASTIC & BLACK
PACKING	PLATING	
0: TAPE & REEL	1: GOLD FLASH	

CKT	DIM A	DIM B	DIM C	DIM D	DIM E
26	20.00	26.48	25.48	21.45	23.35

QUALITY SYMBOLS MAJOR Ⓢ CRITICAL Ⓢ	DRAWN BY Zhu, Wei DATE 21/08/19			
GENERAL TOLERANCES (UNLESS SPECIFIED)	CHECKED BY Xu, Zhi Yong DATE 21/08/19			TITLE 0.8mm Easy On FPC Conn. SMT R/A B/C Type
X ±0.5 .X ±0.25 .XX ±0.15 .XXX ±0.1 ANGLES ±2°	APPROVED BY Xu, Zhi Yong DATE 21/08/19	UNITS mm	SIZE A4	DWG NO. 52505-XXXXX-XXX
	SCALE 2:1	SHEET NO. 1 OF 1	REV A	PART NO. SEE NOTES